



Strangford Lough Yacht Club

Officers

Commodore: Peter Niblock
Hon. Secretary: Jack Kennedy
Hon. Treasurer: Roger Pannell
Sailing Secretary: Ian Bogie
Safety Officer: Colin Cushley

Regatta

9 August 2025

High water: 1401

SUPPLEMENTARY SAILING INSTRUCTIONS

The Organising Authority is Strangford Lough Yacht Club. These Supplementary Sailing Instructions (SSIs) are in addition to the Notice of Race (NoR) and General Sailing Instructions (GSIs), also available at www.strangfordloughregattas.co.uk. RRS 63.5(c) is changed so that in the event of a conflict between the NoR or GSIs and these SSIs, the SSIs shall prevail.

1 Race programme and class code flags

| Race No | Start Time | Class | Code Flag | Course |
|---------|------------|-------------------------------|-----------|----------------|
| 1 | 1300 | Cruiser YTC1 | Numeral 3 | A |
| 2 | 1305 | Impala | Numeral 7 | B |
| 3 | 1310 | Flying Fifteen /RS Elites | A | B |
| 4 | 1315 | Cruiser YTC1 Restricted Sail | Numeral 4 | B |
| 5 | 1320 | Sonata | E | C |
| 6 | 1325 | River | R | C |
| 7 | 1330 | Glen | G | C |
| 8 | 1335 | Cruiser YTC2 | Numeral 5 | C |
| 9 | 1340 | Cruiser YTC2 Restricted Sail | Numeral 6 | D |
| 10 | 1345 | Waverly | W | E |
| 11 | 1350 | Leisure 17 | B | E |
| 12 | 1355 | Dinghy H/Cap PYS 1135 & under | J | E |
| 13 | 1345 | Dinghy H/Cap PYS 1135 & over | V | Pre-set Course |
| 14 | 1348 | ILCA 6 & ILCA 4 | Q | |
| 15 | 1351 | Topper | T | |
| 16 | 1354 | Optimist | O | |

2 Changes to sailing instructions

- 2.1 Any change to the SSIs will be posted on www.strangfordloughregattas.co.uk at least seven days prior to the regatta.

3 Courses (Classes 1 to 12)

- 3.1 Courses will be displayed in frames at the Battery. The Course letter will be black on a yellow background and the marks of the course to be sailed will be shown as either red letters on white background indicating marks to be left to port or white letters on black background indicating marks to be left to starboard.

4 Racing Marks (Classes 1 to 12)

- 4.1 All course marks refer to local SLYC racing marks – see Appendix A. Racing Marks 1 to 5 and Q, R & T are large yellow buoys. Marks A to M are sky blue buoys.

5 Hazards and obstructions

- 5.1 [DP] In the general race area there are a number of rocks and pladdies marked either by black Rock Marks and new for 2025 Navigation Aids the approximate positions of which are listed in Appendix B and shown on the chartlet in Appendix A. All Rock Marks and Navigation Aids must be passed on the side furthest from the hazard they are intended to guard.
- 5.2 The Rock Marks and Navigation Aids may not be in place at all times and competitors should therefore make themselves familiar with the positions of the pladdies and rocks.
- 5.3 Competitors should exercise caution when navigating near to a hazard warning buoy close to the starting and finishing line as an underwater hazard may be present at low water. It can be passed on either side. The approximate co-ordinates of this hazard are at 54.29.182N and 005.37.895W.

6 Starting and Finishing Line (Classes 1 to 12)

- 6.1 The starting and finishing line is between the main mast of the Trasnagh battery and an orange coloured Outer Limit Mark O.
- 6.2 There is a pole marking the end of the battery jetty on Trasnagh and yachts must not sail between it and the island.
- 6.3 All yachts shall keep clear of other classes in the starting area between their preparatory signal and start.

7 Shortened course (Classes 1 to 12)

- 7.1 The race committee may shorten the course by attaching a second blue buoy marked S to any mark of the course. Yachts should return directly to the finishing line from that mark. This changes RRS 32.2 & 33.

8 Time limit

- 8.1 Any yacht failing to finish by 1600 will be deemed to have retired and be scored as DNF.

9 Hearing requests

- 9.1 Hearing requests may be delivered to the race office in the clubhouse.

10 Instruction to Safety and Rescue Crew

- 10.1 Rescue boats are requested to liaise with the Safety Officer prior to the commencement of racing at or before 1130 by radio.
- 10.2 Rescue boats are requested to assist with ferrying to and from moorings before and after racing.

11 Races 13 to 16

STARTING AND FINISHING LINE

- 11.1 The **start/finish line** will be between the Committee Boat flying a blue flag situated to the west of Trasnagh and an Outer Limit Mark O.

START

- 11.2 Races will be started as follows: Warning Signal (Class Flag raised) 2 minutes to the first start (Race 13), Preparatory Signal (Flag P raised) 1 minute to the start, Starting Signal (Class Flag and Flag P removed). The warning signal for subsequent classes will be 1 minute after the start of the preceding class. This changes RRS 26.

COURSES

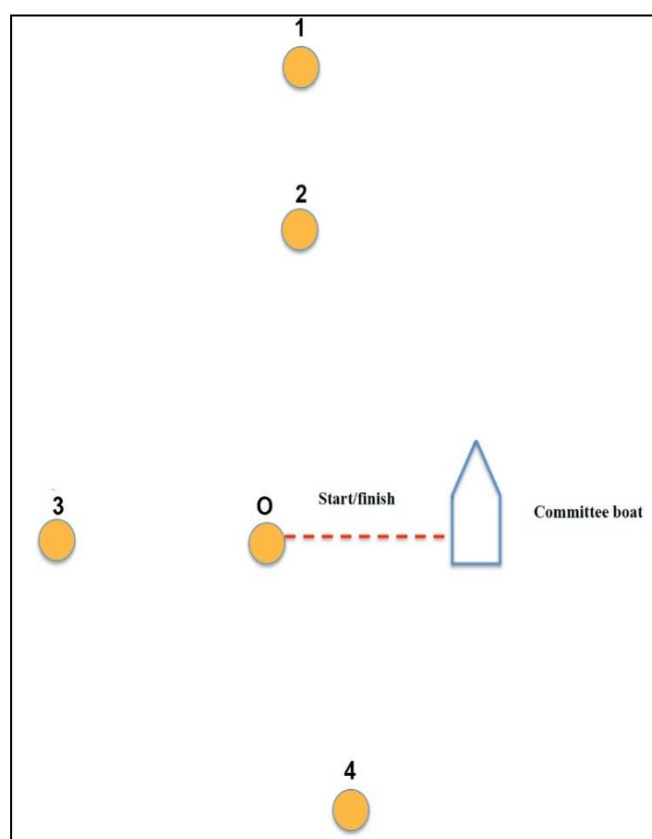
- 11.3 Marks will be pink buoys or yellow or black racing marks. All marks will be left to Port.
- 11.4 **Races 13, 14 & 15** will sail 6 rounds of the following course: Start, 1, 3, 4, Start/finish, 1, 4, Start/finish.
- 11.5 **Race 16** will sail 6 rounds of the following course: Start, 2, 3, 4, Start/finish, 2, 4, Start/finish.

SHORTENED COURSE

- 11.6 The Race Officer may shorten the course to finishing at any mark by displaying Code Flag S alongside the relevant Code Flag to denote which race is being shortened. If Code Flag S is displayed without another Code Flag, all races 13 to 16 will finish at that mark.

11.7 TIME LIMIT

- 11.8 The time limit is 1600.



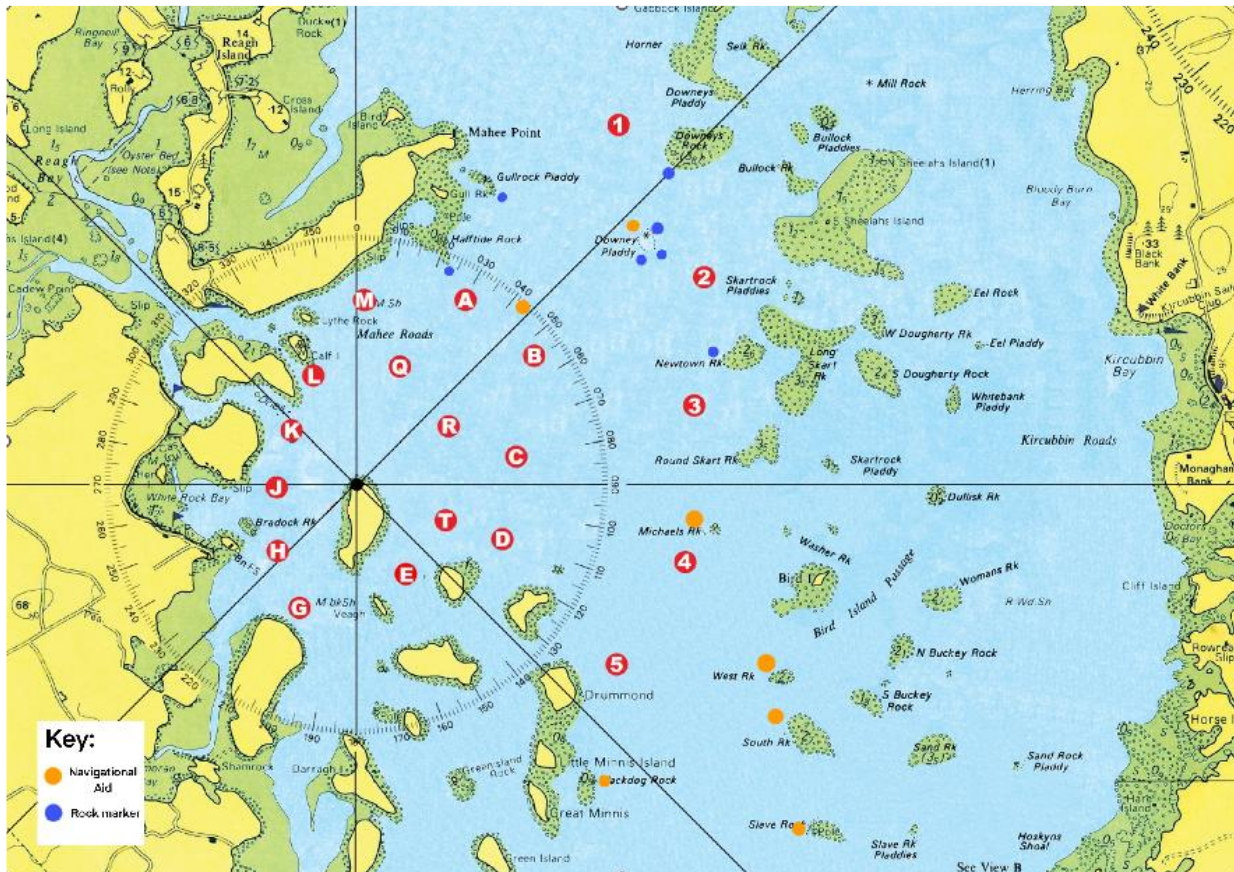
END OF SUPPLEMENTARY SAILING INSTRUCTIONS

After Racing

The prizegiving will be held as soon as possible after the conclusion of racing. All competitors are warmly invited to join us for afternoon tea, evening BBQ and live musical entertainment.

Appendix A

SLYC Racing Mark Chartlet



The above chartlet is *not* for navigation.

Appendix B

The following are the intended positions of the rock and racing marks at SLYC. No liability whatsoever will be accepted for marks which are out of position or missing.

| Racing Marks | Rock Marks |
|-------------------------------|---|
| Mark 1 54° 30.45' 5° 36.00' | Half Tide Rock 54° 29.90' 05° 37.10' |
| Mark 2 54° 29.87' 5° 35.51' | Gullrock Pladdy 54° 30.23' 05° 36.66' |
| Mark 3 54° 29.345' 5° 35.657' | Downey Pladdy (North) 54° 30.10' 05° 35.80' |
| Mark 4 54° 28.80' 5° 35.55' | Downey Pladdy (East) 54° 30.00' 05° 35.70' |
| Mark 5 54° 28.45' 5° 36.00' | Downey Pladdy (South) 54° 29.95' 05° 35.80' |
| Mark A 54° 29.80' 5° 37.10' | Downey Rock 54° 30.30' 05° 35.75' |
| Mark B 54° 29.58' 5° 36.55' | Newton Rock 54° 29.50' 05° 35.40' |
| Mark C 54° 29.22' 5° 36.68' | Navigation Aids |
| Mark D 54° 28.90' 5° 36.75' | Rig Pladdy 54° 29.809 05° 36.786 West Cardinal |
| Mark E 54° 28.80' 5° 37.38' | Downey Pladdy (W) 54° 30.055 05° 35.882 Stbd. Lateral |
| Mark G 54° 28.64' 5° 38.06' | Michaels Rock 54° 28.977 05° 35.558 Stbd. Lateral |
| Mark H 54° 28.84' 5° 38.20' | West Rock 54° 28.419 05° 35.175 West Cardinal |
| Mark J 54° 29.10' 5° 38.20' | South Rock 54° 28.195 05° 35.013 Stbd. Lateral |
| Mark K 54° 29.30' 5° 38.11' | Slave Rock 54° 27.793 05° 34.872 Stbd. Lateral |
| Mark L 54° 29.50' 5° 38.05' | Black Dog Rock 54° 22.268 05° 32.571 Port Lateral |
| Mark M 54° 29.80 5° 37.63' | |
| Mark Q 54° 29.53' 5° 37.50' | |
| Mark R 54° 29.29' 5° 37.08' | |
| Mark T 54° 29.04' 5° 37.00' | |