

NARROWS SERIES PORTAFERRY SAILING CLUB REGATTA

Monday 12th July 2021

RACE PROGRAMME AND CLASS CODE FLAGS				
Race	Start	Class	Code Flags	Course
1	1330	Cruiser IRC0.950 & over	Numeral 1	A
2	1335	Cruiser IRC0.949 & under	Numeral 2	B
3	1340	Cruiser NHC1	Numeral 3	B
4	1345	Flying Fifteen	A	C
5	1350	Cruiser NHC2	Numeral 4	C
6	1355	CruiserRestricted Sail NHC1	Numeral 5	C
7	1400	River	R	D
8	1405	Glen	G	D
9	1410	Squib	E	D
10	1415	Cruiser Restricted Sail NHC2	Numeral 6	D
11	1420	Large Dinghy H/cap1134 & under	J	See Rule 9
12	1425	Dinghy H/capPYS 1135 & over	V	See Rule 9
13	1430	Laser 4.7, Optimist, Toppers & Mirrors	T	See Rule 9

High Water Portaferry 1523 hours

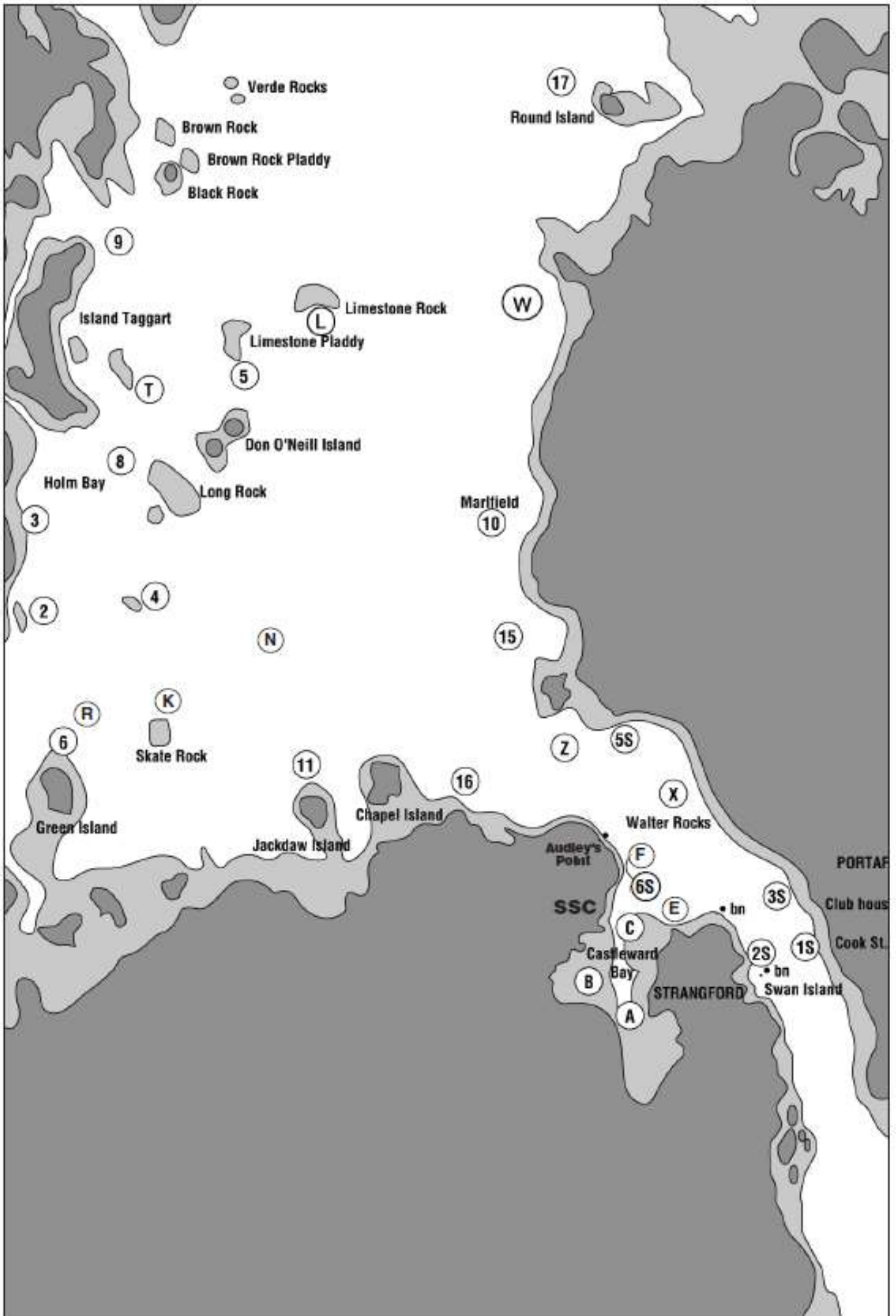
This Regatta will be the second in the Narrows Regatta Series

Commodore Shane McCarthy

Regatta Officer of the Day John McAlea 07877 160234

For further information go to:

<http://www.strangfordloughregattas.com> or www.portaferrysailingclub.com



RULES

1. SHORTENING COURSE

Sound signal and display of Code flag S on Safety Boat. Yachts should return to the finish from this mark. If Code flag F is displayed following sound signal Yachts will finish between this mark and a finishing boat flying a Blue flag.

2. PROTESTS

In writing to the Race Officer within one hour of the race finish, accompanied by a £25 deposit, forfeited if protest is deemed frivolous.

3. SAFETY

It shall be the responsibility of each skipper to decide whether or not to start or continue racing. All crews must comply with their Class Rules regarding craft and personal buoyancy (wet suits alone are not accepted as personal buoyancy.) All dinghies must have a means of adequate bailing. Safety boats may be present, but competitors are encouraged to achieve self-rescue. However, they must accept help if so directed by the rescue crew. Non-acceptance will result in a disqualification. Any yacht retiring must notify the Race Officer as soon as possible. Safety boats are requested to liaise with the Committee Battery prior to the commencement of racing to co-ordinate duties. Safety crews are reminded of the necessity to ferry both before and after racing.

4. THE COMMITTEE

The committee reserve the right to alter the programme, postpone or abandon the Regatta. Competitors are accepted on condition that the Club Committee is not held responsible for injury, loss or damage to people or property, however caused.

5. COMPETITORS

All competitors are requested to sail past Committee Battery to enable the Race Officer to record sail no, class and handicap.

6. PRIZES

A prize will be awarded to the first boat in each class. Prizes will be presented after Racing at the Portaferry Sailing Club house. Note that under Covid regulations club house numbers are restricted, crews are asked to be mindful of fellow competitors and to follow the regulations.

7. HANDICAP CLASS

If four or more boats in any class notify the Race Officer a race will be provided for them. They should start in the appropriate Handicap Class.

8. REFRESHMENTS

Crews are invited to tea in the Clubhouse at Portaferry after racing. Note that under Covid regulations club house numbers are restricted, crews are asked to be mindful of fellow competitors and to follow the regulations.

9. RACES 11, 12 & 13

Will start and finish in Castleward Bay, at Mark C where their course will be displayed. All dinghy sailors must register their entry with the Race Officer before the start of the race and also report their safe return not later than 30 minutes after finishing or retiring.

Note, if weather conditions permit and adequate safety is available Race 11 will get a course in the lough

RACING INSTRUCTIONS

COMPETITORS

Yachts not registered with Strangford Lough Regatta Conference 2019, competing in Races 1, 2, 3, 5, 6, 10, 12 and 13 must confirm their IRC/NHC/PY rating with the Race Officer prior to the start of their race. Failure to comply with this rule may lead to disqualification.

START ALL RACES (except Races 11, 12 & 13 – see Rule 9)

Black Boat Bay continuation of a line marked A, from two flagpoles on shore and inside a limit mark which may or may not be on the line. Cross south to north. Stay outside of inner limit.

FINISH ALL RACES (except Races 11, 12 & 13 – see Rule 9)

A line between a flagpole outside PSC clubhouse and an outer limit mark, cross north to south

COURSES

All Yachts racing must keep west of Walter Rock and wreck at Ballyhenry

Course A - Race 1

Course B - Races 2-3

Course C - Races 4-6

Course D - Races 7-10

DISPLAY AT START OF ALL RACES

Red Numbers: Mark to Port / Green Numbers: Mark to Starboard

Black Numbers: Rounds to be sailed.

TIME LIMIT

Any yacht failing to finish by 1700 hours will be deemed to have retired.