

# NARROW SERIES STRANGFORD SAILING CLUB REGATTA 2019



## Saturday 13th July 2019

RACE PROGRAMME AND CLASS CODE FLAGS				
Race	Start	Class	Code Flags	Course
1	1000	Cruiser IRC0.950 & over	Numeral 1	A
2	1005	Cruiser IRC0.949 & under	Numeral 2	B
3	1010	Cruiser NHC1	Numeral 3	B
4	1015	Flying Fifteen	A	C
5	1020	Cruiser NHC2	Numeral 4	C
6	1025	Cruiser Restricted Sail NHC1	Numeral 5	C
7	1030	River	R	C
8	1035	Glen	G	C
9	1040	Squib	E	C
10	1045	Cruiser Restricted Sail NHC2	Numeral 6	D
11	1050	Leisure 17	Numeral 8	D
12	1030	Large Dinghy H/cap1134 & under	J	See Rule 9
13	1035	Dinghy H/cap PYS 1135 & over	V	See Rule 9
14	1040	Laser 4.7, Optimist, Toppers & Mirrors	T	See Rule 9

**High Water Strangford 1110 hours**

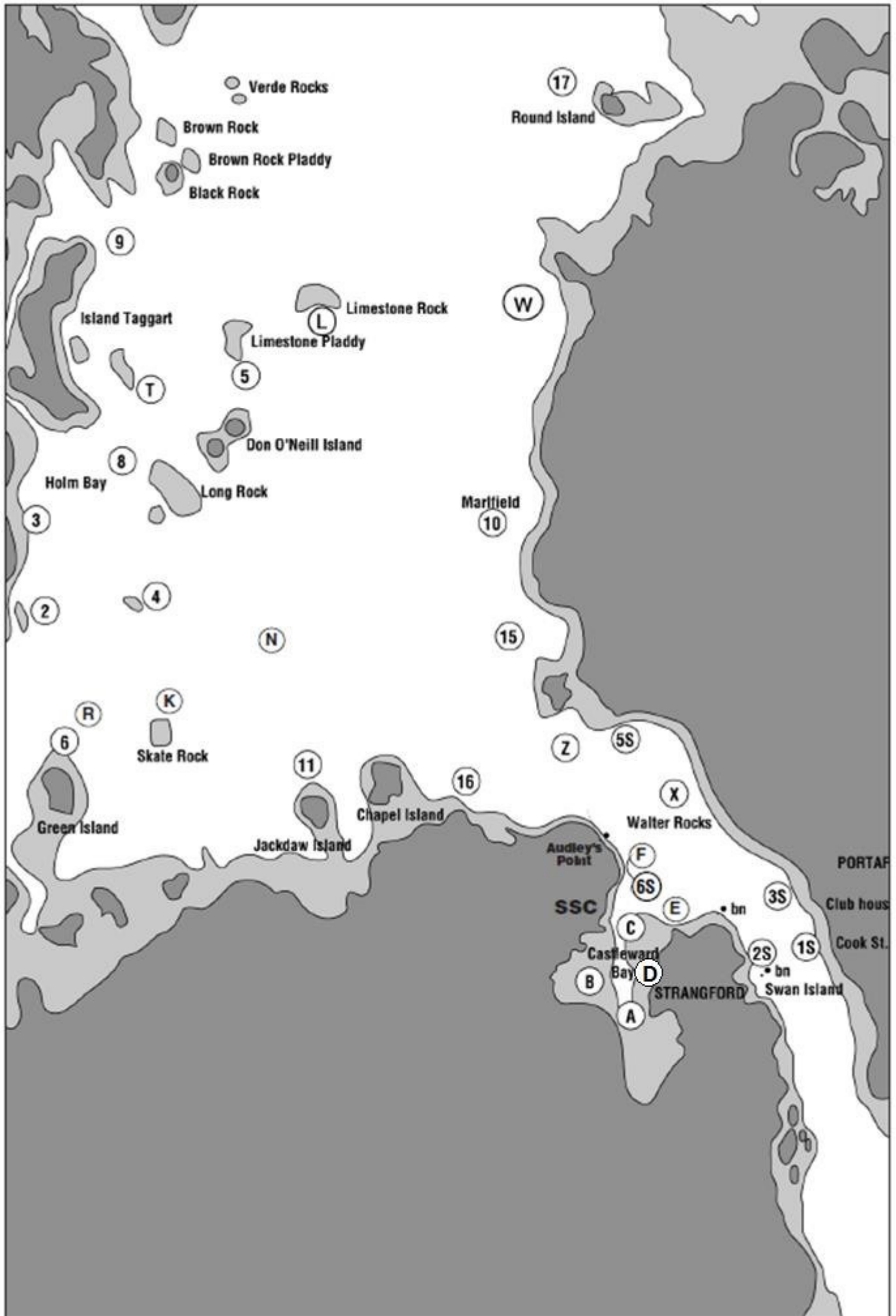
**This Regatta will be the first in the Narrows Regatta Series**

**Commodore: Sean Curran**

**Sailing Secretary: Gerry Reilly Mobile No: 0791 2502669**

**For further information go to:**

**<http://www.strangfordloughregattas.co.uk> or [www.strangfordsailingclub.com](http://www.strangfordsailingclub.com)**



## RULES

### 1. **SHORTENING COURSE**

Sound signal and display of Code flag S on Safety Boat. Yachts should return to the finish from this mark. If Code flag F is displayed following sound signal Yachts will finish between this mark and a finishing boat flying Blue flag.

### 2. **PROTESTS**

In writing to the Race Officer within one hour of the race finish, accompanied by a £25 deposit, forfeited if protest is deemed frivolous.

### 3. **SAFETY**

It shall be the responsibility of each skipper to decide whether or not to start or continue racing. All crews must comply with their Class Rules regarding craft and personal buoyancy (wet suits alone are not accepted as personal buoyancy.) All dinghies must have a means of adequate bailing. Safety boats may be present, but competitors are encouraged to achieve self-rescue. However, they must accept help if so directed by the rescue crew. Non- acceptance will result in disqualification. Any yacht retiring must notify Race Officer as soon as possible. Safety boats are requested to liaise with the Committee Boat prior to the commencement of racing to co-ordinate duties. Safety crews are reminded of the necessity to ferry both before and after racing.

### 4. **THE COMMITTEE**

The committee reserve the right to alter the programme, postpone or abandon the Regatta. Competitors are accepted on condition that the Club Committee is not held responsible for injury, loss or damage to people or property, however caused.

### 5. **COMPETITORS**

All competitors are requested to sail past Committee Boat to enable the Race Officer. to record sail number, class and handicap.

### 6. **PRIZES**

A prize will be awarded to the first boat in each class. Prizes will be presented after Racing at the Clubhouse, Castleward. Overall prizes will be in P.S.C. on Monday, 15th July, after racing.

### 7. **HANDICAP CLASS**

If four or more boats in any class notify the Race Officer. a race will be provided for them. They should start in the appropriate Handicap Class.

### 8. **REFRESHMENTS**

Crews are invited to tea in the Clubhouse at Castleward after racing.

### 9. **RACES 12, 13 & 14**

Will start and finish in Castleward Bay, at Mark C where their course will be displayed. All dinghy sailors must register their entry with the Race Officer before the start of the race and also report their safe return not later than 30 minutes after finishing or retiring.

## RACING INSTRUCTIONS

### **COMPETITORS**

Yachts not registered with Strangford Lough Regatta Conference 2017, competing in Races 1, 2, 3, 5, 6, 10, 12, 13 and 14 must confirm their IRC/NHC/PY rating with the Race Officer prior to the start of their race. Failure to comply with this rule may lead to disqualification.

**START ALL RACES** (except Races 12, 13 & 14 – see Rule 9)

Castleward Bay between main mast of Committee Boat and Mark 6S.

**FINISH ALL RACES** (except Races 12, 13 & 14 – see Rule 9)

Between the main mast of Committee Boat and Mark 6S

### **COURSES**

All Yachts racing must keep west of Walter Rock and wreck at Ballyhenry

Course A - Race 1

Course B - Races 2-3 Course

C - Races 4-8 Course D -

Races 9-10

Course E – Race 11

### **DISPLAY AT START OF ALL RACES**

Red Numbers: Mark to Port / Green Numbers: Mark to Starboard

Black Numbers: Rounds to be sailed.

### **TIME LIMIT**

Any yacht failing to finish by 1400 hours will be deemed to have retired.