

Strangford Lough Yacht Club



OFFICERS

Commodore:	Rosie Baird
Hon. Secretary:	PJ Gault
Hon. Treasurer:	Billy Kohner
Sailing Secretary:	Philip Quinn
Safety Officer:	Colin Cushley

REGATTA Saturday 10th August 2019

RACE PROGRAMME AND CLASS CODE FLAGS				
Race No	Start Time	Class	Code Flag	Course Letter
1	1400	Cruiser IRC 0.950 & over	Numeral 1	A
2	1405	Cruiser IRC 0.949 & under	Numeral 2	B
3	1410	Cruiser NHC1	Numeral 3	B
4	1415	Flying Fifteen	A	C
5	1420	Cruiser NHC2	Numeral 4	C
6	1425	Cruiser NHC1 Restricted Sail	Numeral 5	C
7	1430	River	R	D
8	1435	Glen	G	D
9	1440	Sonata	E	D
10	1445	Cruiser NHC2 Restricted Sail	Numeral 6	D
11	1450	Dinghy H/Cap PYS 1134 & under	J	E
13	1430	Dinghy H/Cap PYS 1135 & over	V	Pre-Set Course
14	1435	Laser Radial	Q	
15	1440	Topper	T	

Competitors in Races 13-15 should report at 1420hrs to the start boat moored on the west side of Trasnagh

High Water: 0940

Low Water: 1600

SUPPLEMENTARY SAILING INSTRUCTIONS – Races 1 - 11

STARTING LINE AND FINISHING LINE

Race No. 1 to 11 - A line from the main mast of the Trasnagh battery to Outer Limit Mark "O".

SHORTENING COURSE

By attaching a second buoy marked S to any mark of the course. Yachts should return to the finish from that mark.

TIME LIMIT

Any yacht failing to finish by 17:30 will be deemed to have retired.

COURSE DETAILS

Courses will be displayed on frames on the battery. The Course Letter will be black on a yellow background. The subsequent course to be sailed will either be red letters on white background (marks rounded to port) or white letters on black background (marks to be rounded to starboard).

All yachts shall be required to sail through the start finish line from the direction of the last mark on completing each round before sailing the new course, (if any) for subsequent rounds.

All course marks refer to local SLYC racing marks – see Addendum A. Racing Marks 1 to 5 and Q, R & T are large yellow buoys. Marks A to M are Sky Blue buoys.

INSTRUCTIONS TO SAFETY AND RESCUE CREW

Rescue boats are requested to liaise with the Safety Officer prior to the commencement of racing at 13:45.

Rescue boats are reminded of the necessity to ferry before and after racing.

Crews should be familiar with R.Y.A. and class safety regulations.

PRIZEGIVING AND REFRESHMENTS

All competitors and their families are invited to enjoy refreshments in the clubhouse after racing followed by the award of prizes. A prize will be awarded to the first boat in each race. Live music and food will commence immediately after prizegiving and a ferry service will be available until at least 9pm. Please ask at the bar with regard to ferry service. Moorings are available for an overnight stay as are our pontoons – please just ask!

N.B. These instructions are supplementary to the full sailing instructions, available on the SLRC website

SUPPLEMENTARY SAILING INSTRUCTIONS - RACES 13 – 15

For General Sailing instructions please see: www.strangfordloughregattas.co.uk

START LINE

The line will be between the Committee Boat flying a Blue Flag situated to the west of Trasnagh and an Outer Limit Mark, which may be used as a mark of the course.

The Start

Races will be started as follows: Warning Signal (Class Flag raised) 2 minutes to the first start (Race 13), Preparatory Signal (Flag P raised) 1 minute to the start, Starting Signal (Class Flag and Flag P removed). The warning signal for subsequent classes will be 1 minute after the start of the preceding class.

COURSES

The courses will be of the Olympic Triangle/Sausage format. All marks to Port.

Marks will be pink buoys or yellow or black racing marks.

Races 13 & 14 will sail 6 rounds of the following course: Start, 1, 3, 4, SF, 1, 4, SF.

Race 15 (Toppers) will sail 6 rounds of the following course: Start, 2, 3, 4, SF, 2, 4, SF.

Shortened Course:

The Race Officer may shorten the course at any mark by flying Code Flag S alongside the relevant Race Number Code Flag to denote which Race is being shortened.

FINISH

The finish line shall be between the Committee boat flying a blue flag and the Outer Limit mark or as otherwise indicated by the Race Officer.

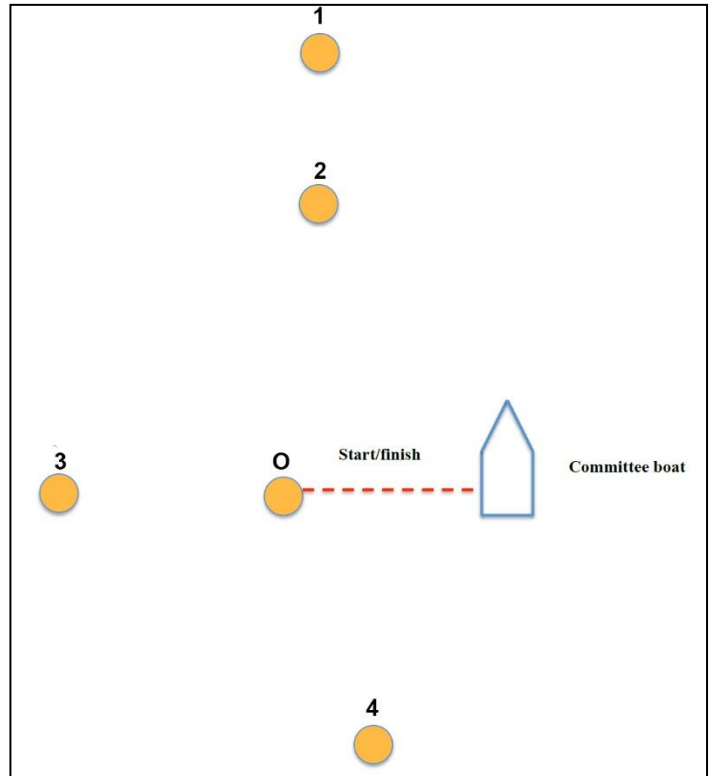
TIME LIMIT

Any boat which has not finished by 1600 hours shall be deemed to have retired.

PROTESTS

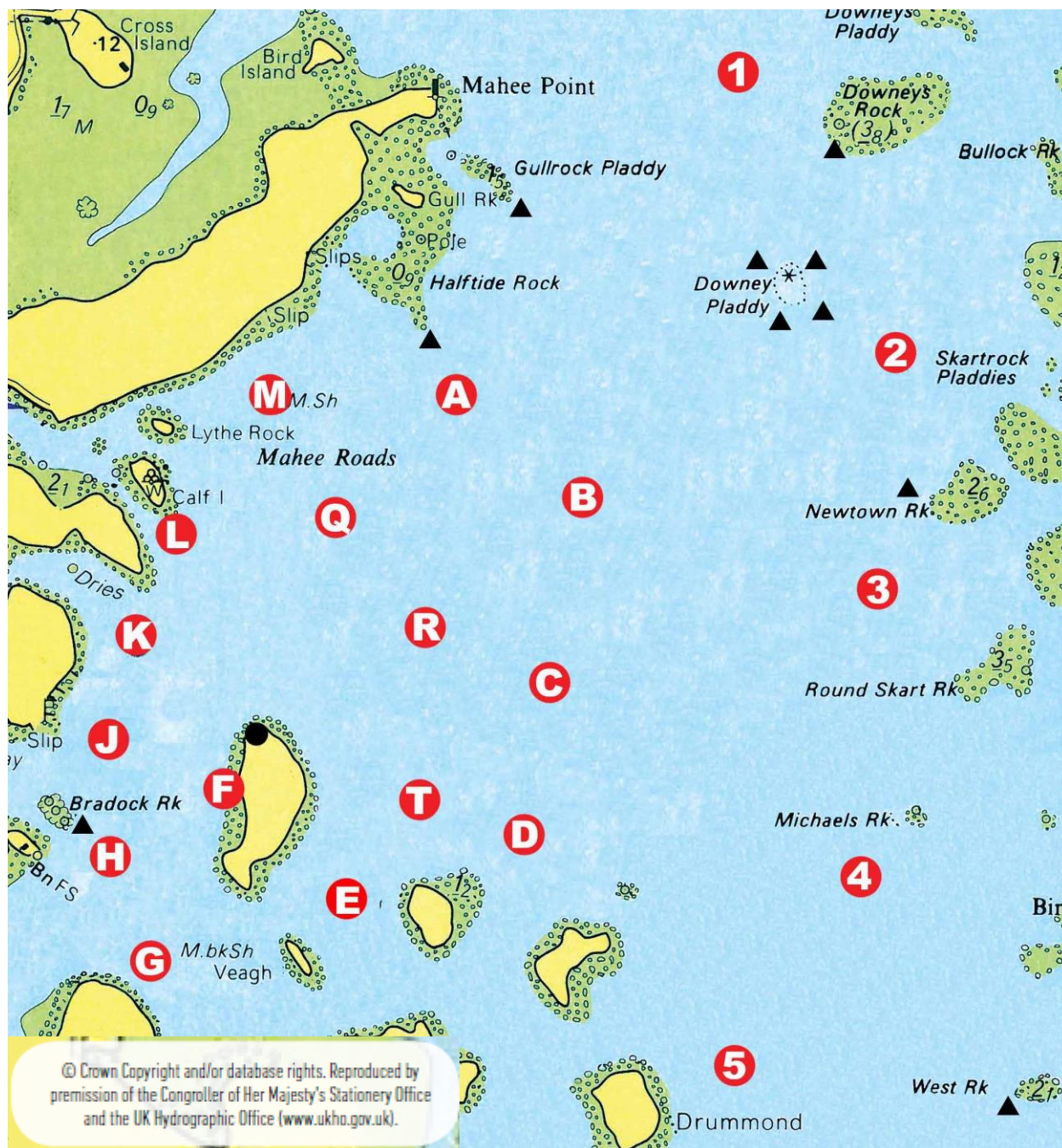
Protests on the RYA form with £10 deposit must be lodged at the Race Office in the Clubhouse WITHIN one hour after the last boat has finished.

Visiting crews are invited to the Clubhouse for tea after racing and for the evening's entertainment.



Racing Marks at SLYC

NB: Not to be used for navigation.



Please note:

1. There are **no rock marks** around Downey Pladdy and yachts should take care when sailing in this area.
2. Mark 'F' on the above chartlet is missing for this year.