



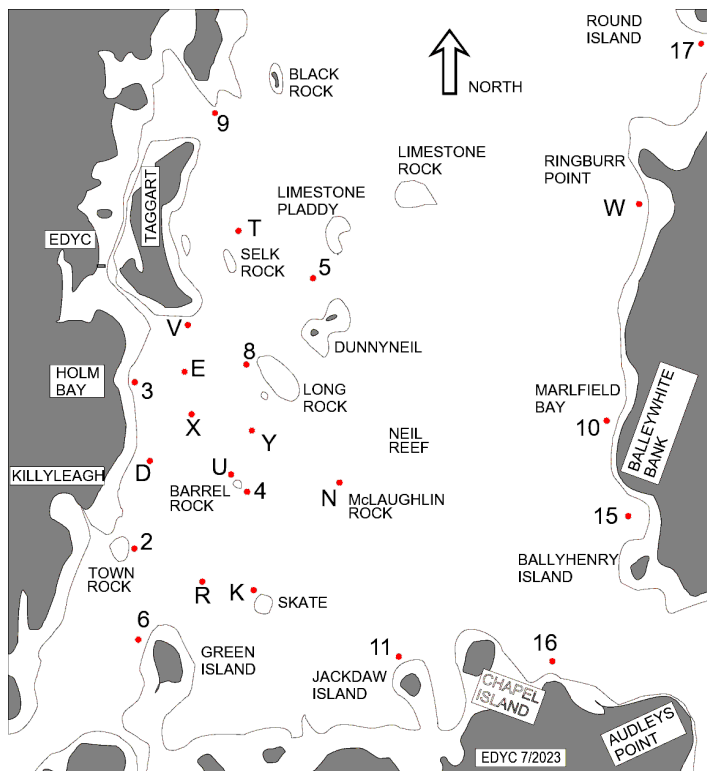
Supplementary Sailing Instructions

Schedule of races

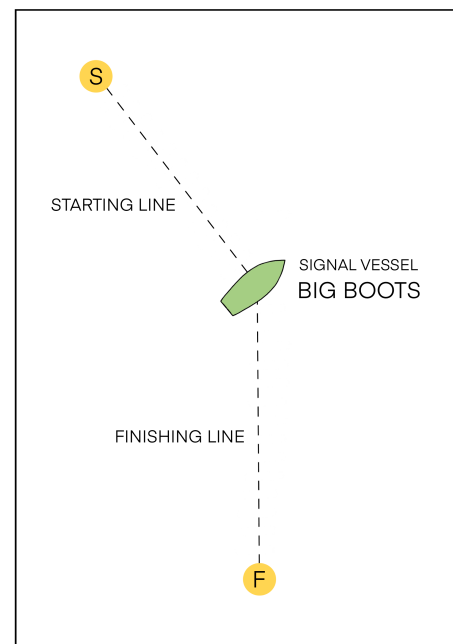
High tide Killyleagh 1549 BST

Race	Start	Class	Flag	Course
1	12:30	Cruiser IRC 1 0.950 or above	Numeral 1	A
2	12:35	Cruiser IRC 2 0.949 or below	Numeral 2	B
3	12:40	Hunter Impala 28 OOD	Numeral 7	B
4	12:45	Cruiser NHC1	Numeral 3	B
5	12:50	Flying Fifteen	A	C
6	12:55	Cruiser NHC2	Numeral 4	C
7	13:00	Cruiser NHC1 Restricted Sail	Numeral 5	C
8	13:05	River	R	D
9	13:10	Glen	G	D
10	13:15	Squib	E	D
11	13:20	Cruiser NHC2 Restricted Sail	Numeral 6	D
13	13:25	Dinghy 1 PY 1133 or below including Wayfarer	W	E
14	13:30	Leisure 17	B	E
14	13:35	Waverley	T	E
15	13:40	Dinghy 2 PY 1134 or above including Topper	V	F

Approximate location of racing marks



Starting and finishing lines



The position of the signal vessel and marks will suit the weather conditions; above is one example arrangement.

1 Rules

- 1.1 The event is governed by the rules as defined in The Racing Rules of Sailing.
- 1.2 The prescriptions of the Royal Yachting Association shall apply.
- 1.3 The [General Rules and Sailing Instructions For Strangford Lough Regattas](#) shall apply.

2 Changes to Sailing Instructions

- 2.1 Any change to the sailing instructions will be posted before 09:00 on the day it will take effect, except that any change to the schedule of races will be posted by 20:00 on the day before it will take effect.
- 2.2 Changes to a sailing instruction may be made on the water by a committee vessel by communicating with a boat verbally or using VHF radio channel 37 before her warning signal. Code flag L will be displayed on the race committee signal vessel.

3 Communications with Competitors

- 3.1 Notices to competitors will be posted on the online notice board on the EDYC web site at <https://edyc.co.uk/2023/07/23/edyc-regatta-2023-sis-and-online-noticeboard/>.
- 3.2 The race office is located on the first floor of the clubhouse in the Holm Bay Bar.
- 3.3 On the water, the race committee intends to monitor VHF radio channel 37.

4 Code of Conduct

- 4.1 Competitors and support persons shall comply with reasonable requests from race officials.

5 Signals Made Ashore

- 5.1 Signals made ashore will be displayed at the flag pole at the front of the clubhouse.

6 Schedule of Races and Class Flags

- 6.1 The schedule of races and class flags are shown in the table on the first page.
- 6.2 To alert boats that a race or sequence of races will begin soon, the orange starting line flag will be displayed with one sound at least five minutes before a warning signal is made.

8 Racing Areas

- 8.1 All boats shall pass North of marks K and R, and to the seaward side of marks 2 and 6 unless these are marks of that course.

9 Courses

- 9.1 The course for a class shall be displayed on the signal vessel at its warning signal.
- 9.2 The course code shall be displayed first, to the left of the marks of the course.
- 9.3 Marks of the course shall be read from left to right; red numbers on a white background shall be left to port; green numbers on a white background shall be left to starboard.
- 9.4 The number of laps of the course to be sailed may be indicated by a black number on a white background; if no card shows a black number on a white background then the course is one lap. All boats shall cross the line between the red and white pole on the signal vessel and a yellow buoy marked 'F' at the end of each lap.

10 Marks

- 10.1 The sketch on the first page shows the approximate location of racing marks. It is not suitable for navigation purposes and is not to scale.

12 The Start

- 12.1 Races will be started as follows: The class flag for each race will be displayed 10 minutes before the start as the warning signal. For the first race, code flag P will be displayed as the preparatory signal 5 minutes before the start. The starting signal for each race will be the removal of the class flag. Code flag P will not be removed until after the last race has started. For each race after the first the preparatory signal will be the starting signal for the preceding class.
- 12.2 The starting line is between a red and white pole on the signal vessel and a yellow buoy marked 'S'.
- 12.3 Boats whose warning signal has not been made shall avoid the starting area during the starting sequence for other races.
- 12.5 A boat that does not start within 10 minutes after her starting signal will be scored Did Not Start without a hearing. This changes rule A5.1 and A5.2.

14 The Finish

- 14.1 The finishing line is between the red and white pole on the signal vessel and a yellow buoy marked 'F'. All boats must cross this line at the end of each lap.
Please also note rule 32 and the role of flag S in signalling a shortened course.

16 Time Limit

- 16.1 The Race Time Limit (see rule 35) is 1600 BST.
- 16.2 If a course includes more than one lap and no boats finish the second or subsequent lap before the Race Time Limit then all boats shall be scored according to the time at the end of their last completed lap. This amends rule 35.

17 Hearing Requests

- 17.1 The protest time limit is 60 minutes after the last boat finishes. The time will be posted on the online notice board.
- 17.2 Hearing request forms are available from the race office or for [download](#) from the online notice board.
- 17.3 Notices will be posted on the online notice board no later than 30 minutes after the protest time limit to inform competitors of hearings in which they are parties or named as witnesses. Hearings will be held on the EDYC site, beginning at the time and location posted on the online notice board.

19 Safety Regulations

- 19.1 A boat that retires from a race shall notify the race committee at the first reasonable opportunity.

23 Official Vessels

- 23.1 The signal vessel will be a pale green yacht, "Big Boots", positioned in Holm Bay.

29 Prizes

- 29.1 In races 1 to 13, prizes will be given in each class for first place.
- 29.2 In race 15, two prizes will be awarded. Each prize will be awarded based on corrected time under the PY system. One prize will be awarded to the highest placed ILCA6, ILCA4 or RS Feva XL. The other prize will be awarded to the highest placed boat of a different design. For example this prize may be won by the first Optimist or Topper on corrected time.

32 Privacy Statement

32.1 The personal information you provide to the organizing authority will be used to facilitate your participation in the event. The results of the event and the outcome of any hearing or appeal may be published. Photographs or images of the event may be published on the EDYC website or social media.

Information

Instructions to safety boat crew

Safety boats should report to 'EDYC Safety' prior to commencement of racing, using VHF channel 37.

EDYC Officers

Commodore	Keith Carr
Hon Secretary	Alan Wood
Sailing Captain	Gina Lyttle
Safety Officer	Finbar Jennings
Regatta Race Officer	Keith Maxwell

Entertainment, prize giving and refreshments

All competitors, their families and friends are invited for refreshments and live music in the EDYC clubhouse after racing, followed by the award of prizes. A barbecue, on a 'buy a BBQ pack at EDYC & cook your own' arrangement will be available after prize giving.

EDYC Pontoon

Boats may dock and raft up at the EDYC pontoon. Please note that access to the pontoon from Holm Bay is navigable, 2 hours either side of high water, depending on draft.

Ferrying

After racing, safety boats are requested to assist with ferrying crew between the Holm Bay moorings, the Dorn, and the EDYC pontoon.