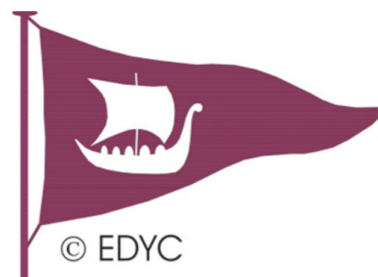


# EAST DOWN YACHT CLUB

## OFFICERS:

Commodore	Margie Crawford
Vice-Commodore	Gordon Reid
Hon Secretary	Alan Wood
Sailing Captain	Rebecca Jeffery
Regatta Race Officer	Gordon Reid



## REGATTA Saturday 12th August 2017

First start: 1300 hrs

Tide Information - Killyleagh:

High Water 16:52 BST 3.3m, Low Water 22:56 BST 0.6m

## Supplementary Sailing Instructions (SSI)

These instructions are supplementary to the General Sailing Instructions on the SLRC website.

### RACE PROGRAMME, CLASS FLAGS AND COURSE CODES

Race	Start	Class	Class Flag	Course Code
1	1300	Cruiser IRC 0.950 & over	Numeral 1	A
2	1305	Cruiser IRC 0.949 & under	Numeral 2	B
3	1310	Cruiser NHC 1	Numeral 4	B
4	1315	Flying Fifteen	A	C
5	1320	Cruiser NHC 2 incorporating Sonata	Numeral 5	C
6	1325	Cruiser NHC 1 Restricted Sail	Numeral 7	C
7	1330	River	R	D
8	1335	Glen	G	D
9	1340	Cruiser NHC 2 Restricted Sail	Numeral 3	D
10	1345	Squib	E	E
11	1350	Wayfarer	W	E
12	1355	Dinghy Handicap PYS 1134 & under	J	E
13	1400	Leisure 17	B	E
14	1405	Dinghy Handicap PYS 1135 & over	V	F

#### 1. START LINE

A line between a red/white pole on the Committee Boat and a yellow buoy marked 'S'.

#### 2. FINISH & INTERVENING ROUNDS

A separate line between the red/white pole on the Committee Boat and a yellow buoy marked 'F'. All competitors must pass through this line on intervening rounds. No request for redress will be considered. This changes RRS 63.1.

### **3. COURSE DETAILS AND METHOD OF DISPLAY**

Courses will be displayed on boards on the Committee Boat.

The course Code for each class is listed in these SSI's.

Boards will be ordered as follows, reading left to right:

- Course Code
- Marks to be rounded (red to Port, green to Starboard).
- Number of rounds to be sailed (black number on white board)

All boats shall pass north of marks K and R, and to the seaward side of marks 2 & 6 unless these are marks of that course.

### **4. SHORTENING COURSE**

By display of flag 'S' above the class code flag at the beginning of the round to be shortened, and display of the new course on the Committee Boat. Races may be finished at any mark of the course by display of a blue flag with the appropriate class flag/s and with suitable sound signals.

### **5. VALIDITY OF RACES**

A race other than for IRC 0.949 and under, shall be valid if 2 or more boats start correctly in a scheduled race. Any boats for which there is no scheduled class should compete in the appropriate handicap class upon declaring their intention and handicap to the Race Officer before they start.

### **6. PROTESTS**

Any protests shall be lodged not more than one hour after the finish time of the last boat in the classes concerned. Lodge protests with named personnel at the EDYC kitchen, who will register the time of receipt.

### **7. TIME LIMIT**

Any boat not finishing by 1700hrs shall be scored as DNF.

### **8. PRIZES**

A prize shall be awarded to the winning boat in each valid race. A prize will be awarded to the first Topper and first RS Feva if more than 2 Toppers or Fevas start in Dinghy Handicap PYS 1135 and over, and if a different type of boat wins on handicap.

### **9. CHANGES TO SAILING INSTRUCTIONS**

Changes to these SSIs may be made up to one hour before the start of each class race and shall be posted on the EDYC notice board in the clubhouse (usually the window of the McRobert Room near the entrance).

## **INFORMATION**

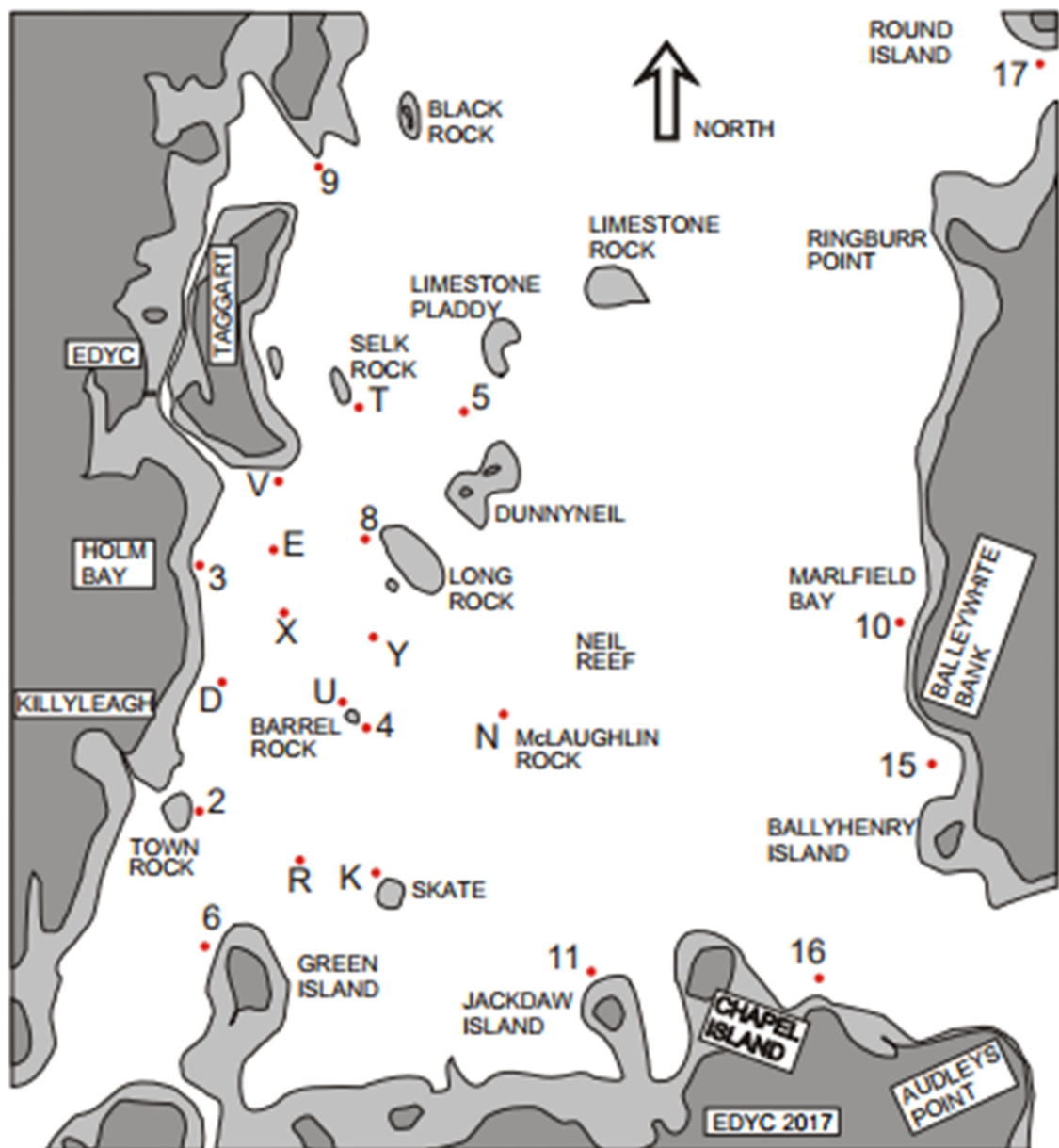
**INSTRUCTIONS TO SAFETY & RESCUE CREW.** Safety boats should report to the EDYC Safety Officer prior to commencement of racing, using VHF channel 37, or as otherwise directed.

**PRIZEGIVING & REFRESHMENTS.** All competitors, their families and friends are invited to refreshments in the EDYC clubhouse after racing, followed by the presentation of prizes. Visitors are most welcome to join members for the evening entertainment and barbeque, which will be a 'buy a BBQ pack at EDYC & cook it yourself' arrangement.

**CLUB PONTOON.** Boats may dock and raft up at the EDYC pontoon, but check your tides.

**FERRYING.** After racing, safety boats are requested to assist with ferrying crew between Holm Bay moorings, the Dorn, and the EDYC pontoon. The Dorn will be shallowest at 2256 BST.

# MARKS FOR EDYC CLUB RACING



This sketch is intended only to indicate the approximate normal location of the racing marks used by EDYC. It is not suitable for navigation purposes and is not to scale.

A copy may be downloaded from [www.edyc.co.uk](http://www.edyc.co.uk)